

2024 ANNUAL REPORT



All God's People On Mission With God

Contents

What this report covers

- From The Director
- Exciting New Developments
- Global Development
- SM Youth
- Personnel Changes
- Finance Report
- Looking Ahead

From the Director



- 2024 has been a year of continuing growth, new developments and change.
- Growth in the regions has been evident through the Regional Conferences the regions themselves have organized and run.
- We have been further developing our 'flagship' SM product of the INTERFACE Program (Missional church).
- New initiatives aim to strengthen the SM message by deepening the understanding of Mobiology (the theology of Mobilization).
- Discussions on the School for Mobilizers (SfM) now to be developed in 2026.
- Several long-serving personnel have retired from SMI or are planning to retire, while new personnel are being added.

Max W Chismon
International Director

Interface Program Dev't

Exciting New Development

Interface Workshop One



Growing our SM 'flagship' product (Interface) by adding Workshop One to the popular Seminar.

Nature of Workshop One

Workshop One looks at growing 'missional disciples', making Interface an excellent local church Discipleship Program that involves every believer.

Desired Outcome

The whole church learning to live life on mission with God, 24/7.

The trial period is over, and tutorials will now be produced (first quarter of 2025)!

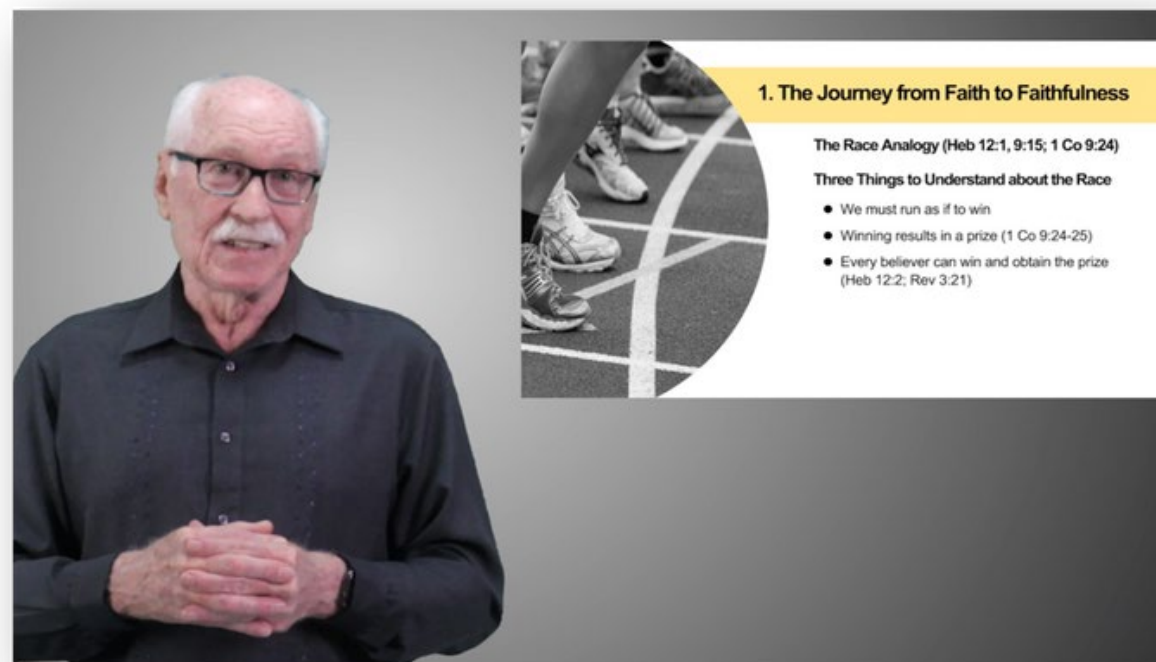


Interface Seminar

12-Minute Mobiology

This is a video presentation of the Bible's Story from a mobiology perspective.

- This program is for the SM family (internal).
- It is shared in 12-minute video sessions and includes notes and a short backstory – the 'why' of that particular session.
- We hope to extract from this 12-minute mobiology a series on the Story of the Bible for local churches.



Strengthening the Mobiology Message with the SM Family

Exciting New Development

12 minute
MOBIOLOGY

Preparation for the School for Mobilizers (SfM)

The International SfM:

- To be hosted at the International Center
- It will be a unique 7-week training for SM leaders who will then set up similar schools back in their region or country.
- The development will take place in 2026, once the Interface Program has been fully developed, trialed and rolled out. It will involve key SM global leaders who will collaborate on designing this SfM.



Global Development

New Countries



Senegal

Interface & multiple courses in April/May



Equatorial Guinea

2x Interface seminars in September



Eswatini

3x Interface seminars since August 2023



Lebanon

TUS launched in July but war challenges



Georgia

Kairos
TUSfY (November 2023)



Albania

(previously inactive)



Fiji

(previously inactive)

Regional Conferences



Europe
(May, Finland)



West Africa
(June, Burkina Faso)



SE Asia
(October, Indonesia)



Latin America
(November, Online)

Training Modules for SM Global Development

Available

Intro to SM

Trialing

Building Beyond Blessing

Available

Intro to SM
Translation Projects

Available

Franchise Training
(Translation Module)

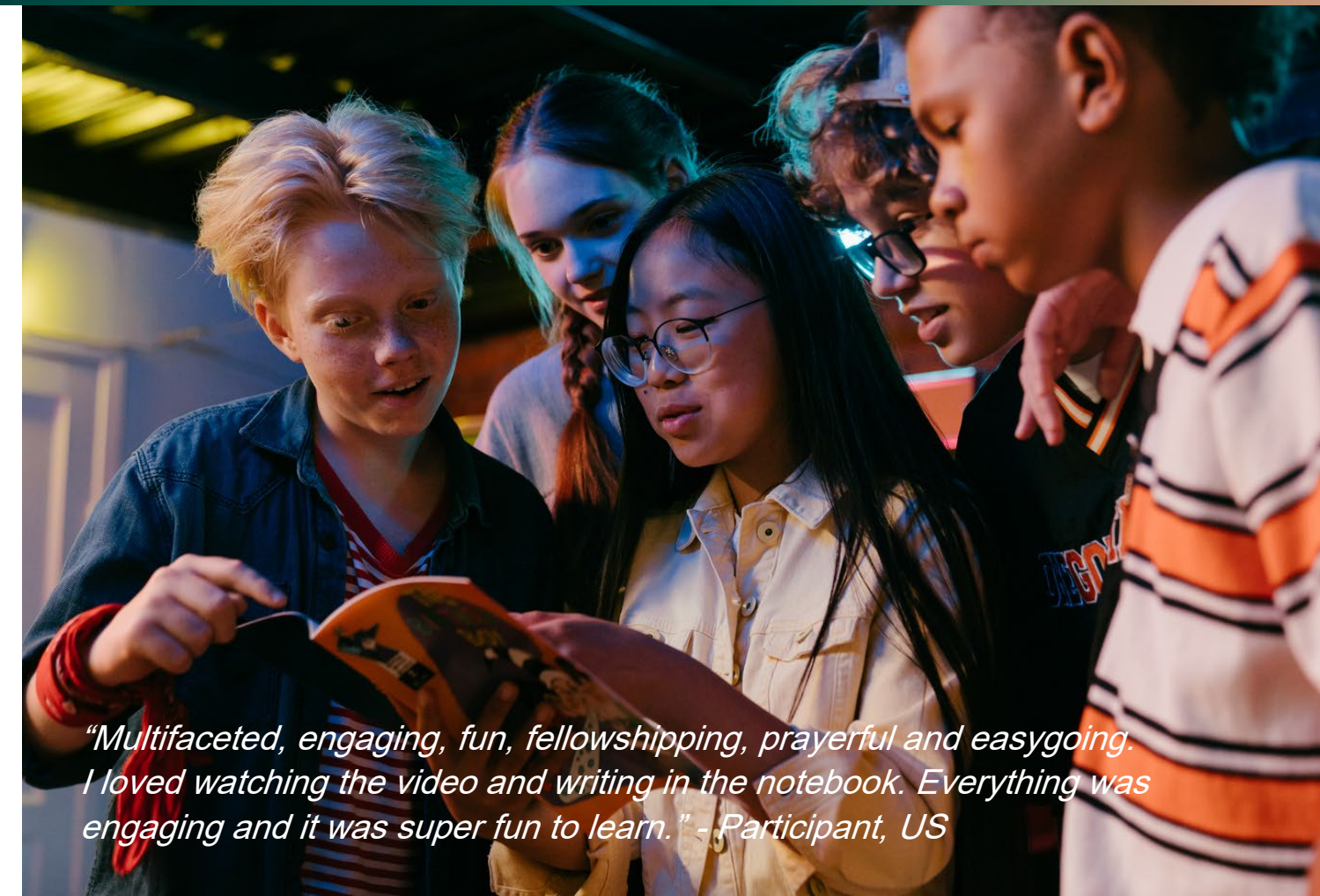
Trialing

Dynamic Equivalent
Translations Workshop

SM Youth 2024

TUSfY Highlights (1 year mark)

- Official Package released in April
- Trials including multiple formats/schedules and contexts
- Stats:
 - 13 Translation Projects (5 already being trialed)
 - 8 Regions
 - 17 Countries
 - +60 Courses



"Multifaceted, engaging, fun, fellowshipping, prayerful and easygoing. I loved watching the video and writing in the notebook. Everything was engaging and it was super fun to learn." - Participant, US



Youth Mobilization Workshop



- 4-hour program (adaptable to other contexts)
- Aims to educate, inspire and challenge participants to strategically engage and mobilize young people for God's mission.

SMI Personnel

Changes

Chief Financial Officer (CFO)

Peter McDougall stepped down in August 2024 as CFO.

Luchie Swinton has stepped into this vital role, and we are confident that Luchie will be a great blessing. We thank Peter for the foundation work he has done in many areas of leadership with SMI over many years.

General Manager

Lecille Garcia has now retired from SMI (end of January 2025). Lecille's multiple roles will be filled by a team of four. Lecille, will be greatly missed after several decades of being a key person in the global development of SMI.

Resource Development Department (RDD)

John d'Kock has stepped down from his role as RDD. We thank John for the pioneering work he has done in this area.



**Peter
McDougall**



**Luchie
Swinton**



**Lecille
Garcia**



**John
d'Kock**

Finance Report

Income Source

Partners-Local \$8,411

Partners-Foreign \$8,318

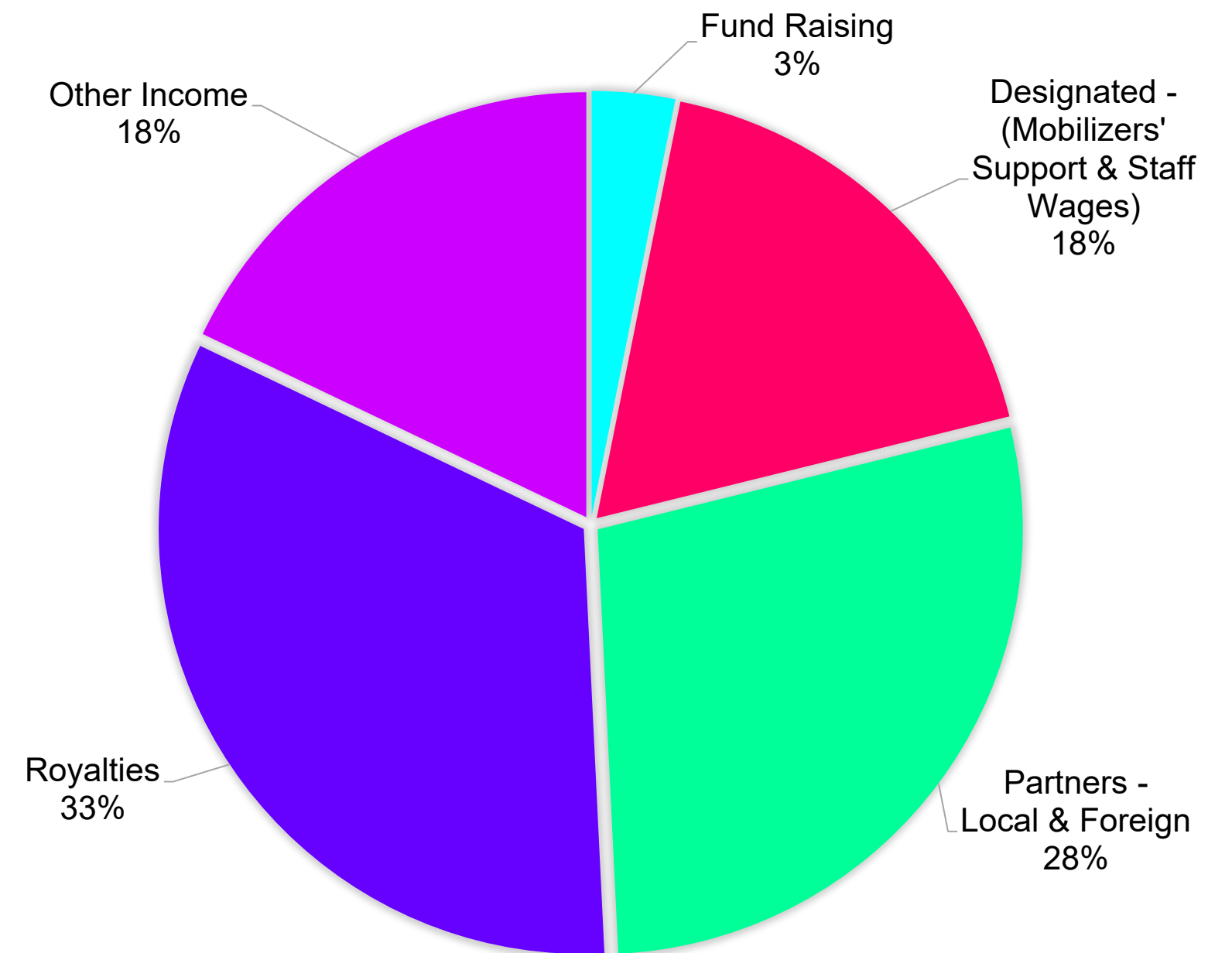
Mobilizers' Support \$4,313

Donations-Staff Wages \$6,049

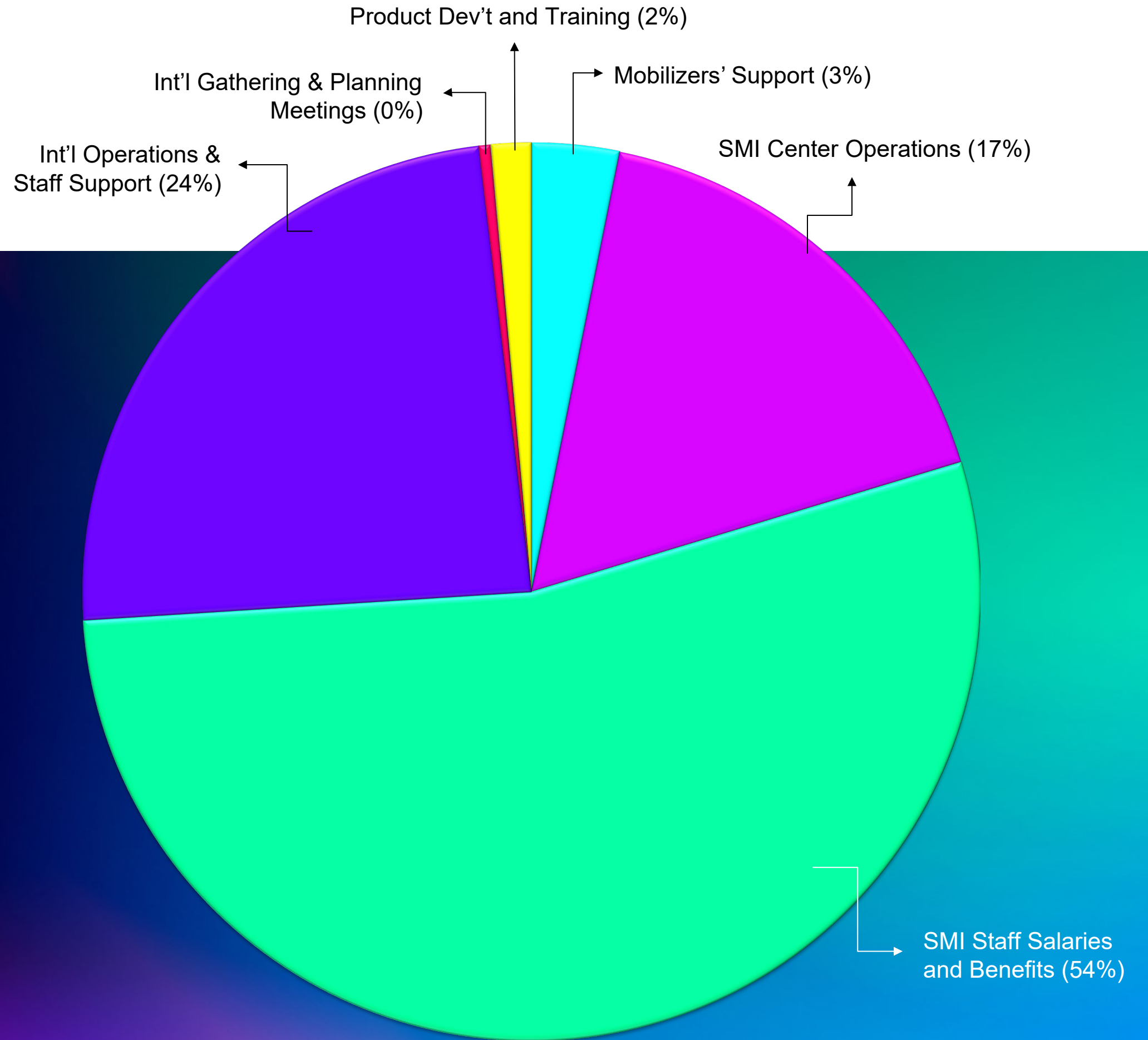
Royalties \$18,537

Fund Raising \$1,819

Other Income \$10,313



Expenses



Mobilizers' Support
\$2,284

SMI Staff Salaries and Benefits
\$51,410

SMI Center Operations
\$12,441

Int'l. Operations & Staff Support
\$17,491

Product Development and Training
\$1,041

Int'l. Gatherings & Planning Meetings
\$303

Looking Ahead (2025)

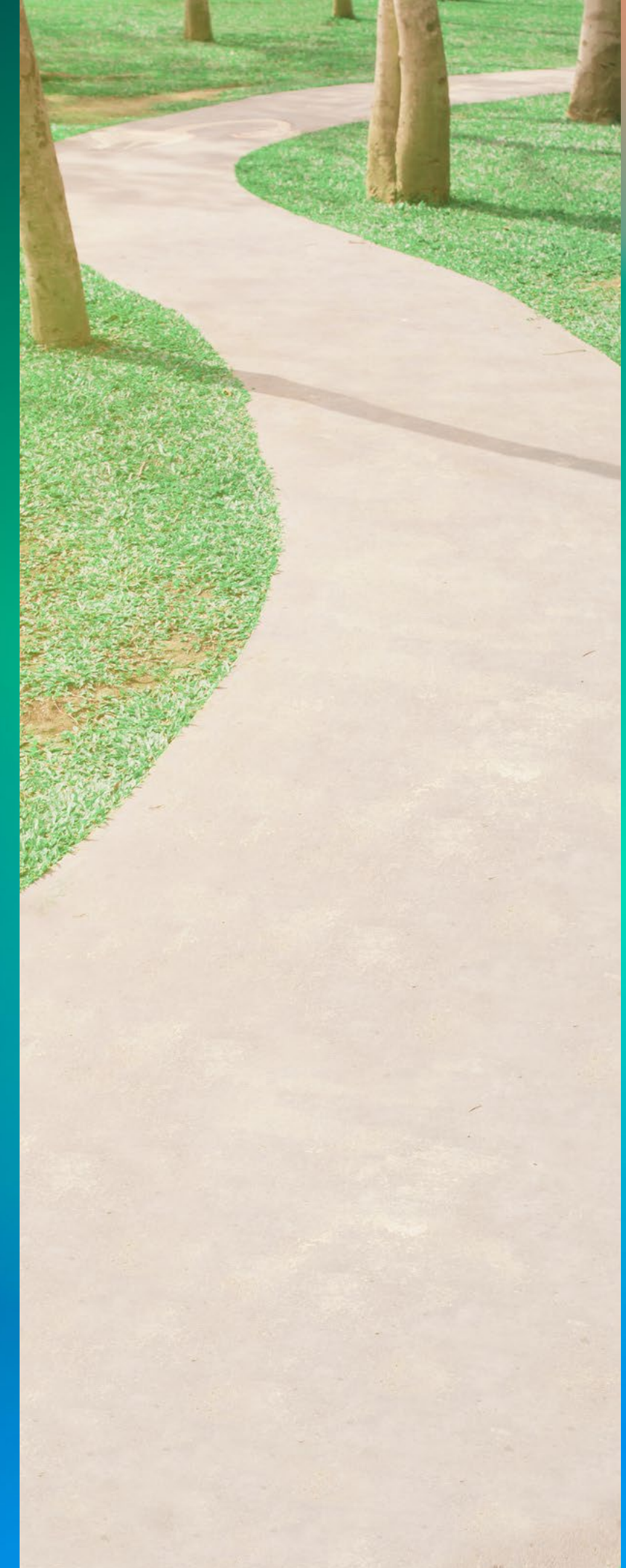
Regional Conferences will be held in 2025

Southern Africa, MENA, Latin America and East Asia

The roll -out of the Interface Workshop One and the trialing of Workshop Two and Workshop Three.

The roll -out of 12 -Minute Mobiology for our internal audience and the development of TSB (The Story of the Bible) for local churches

The ongoing development of the Resource Development Department.



Thank You

All God's People Living a Life On Mission With God



www.simplymobilizing.com
globaldesk@simplymobilizing.com